



# **SAFMC Managed Areas – *Digital Outreach Materials***

**November 2-3, 2016**



***Information & Education AP Meeting***

# SAFMC Digital Dashboard

[http://ocean.floridamarine.org/safmc\\_dashboard/](http://ocean.floridamarine.org/safmc_dashboard/)

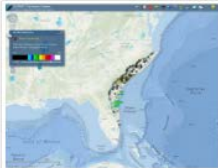
## SAFMC Digital Dashboard

[Home](#) [GIS Data](#) [Partners](#) [Projects](#) [Contact Us](#)

Explore the marine and fishery resources of the South Atlantic Bight.



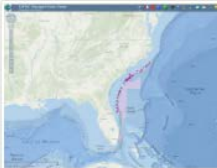
### Web Mapping Applications



#### Fisheries

This application displays fishery independent data collected by the SEAMAP - South Atlantic (SA) component and by the Marine Resources Monitoring, Assessment, and Prediction (MARMAP) program. The application also contains bathymetry, benthic habitats, focal species strata, EcoGIS layers and regulatory boundaries.

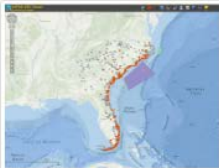
[View Project](#)



#### Managed Areas

This web application provides users an opportunity to view managed areas in the SAFMC's jurisdiction. The application contains data for the Allowable Golden Crab Fishery Areas, Shrimp Fishery Access Areas, and Deepwater Coral HAPCs. The application also includes SAFMC Restrictions, Marine Protected Areas, Oculina CHAPC, Danger Zones, and other Federal Marine Managed Areas.

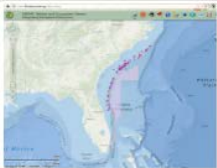
[View Project](#)



#### Essential Fish Habitat

You can access available maps of EFH and HAPCs in the South Atlantic region using the SAFMC EFH Viewer. This application displays Essential Fish Habitat (EFH) and Essential Fish Habitat-Habitat Areas of Particular Concern (EFH-HAPCs) for several species under SAFMC's jurisdiction. It also displays EFH for Highly Migratory Species (HMS) managed by NOAA Fisheries.

[View Project](#)



#### SAFMC Habitat and Ecosystem Atlas

The SAFMC Regional Habitat and Ecosystem Atlas is here! The SAFMC Habitat and Ecosystem Atlas is a comprehensive site to view a variety of map services supporting fishery management issues in the South Atlantic Bight.

[View Project](#)



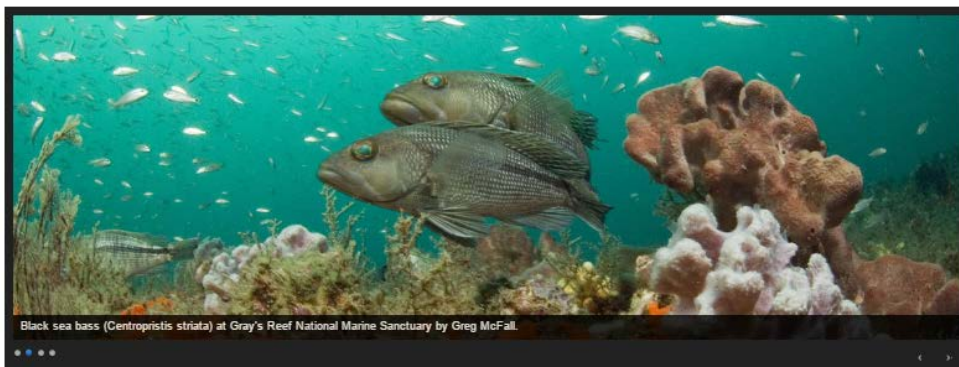
# SAFMC Digital Dashboard

[http://ocean.floridamarine.org/safmc\\_dashboard/](http://ocean.floridamarine.org/safmc_dashboard/)

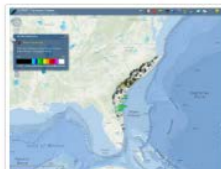
## SAFMC Digital Dashboard

[Home](#) [GIS Data](#) [Partners](#) [Projects](#) [Contact Us](#)

Explore the marine and fishery resources of the South Atlantic Bight.



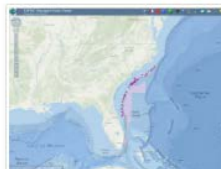
## Web Mapping Applications



### Fisheries

This application displays fishery independent data collected by the SEAMAP - South Atlantic (SA) component and by the Marine Resources Monitoring, Assessment, and Prediction (MARMAP) program. The application also contains bathymetry, benthic habitats, focal species strata, EcoGIS layers and regulatory boundaries.

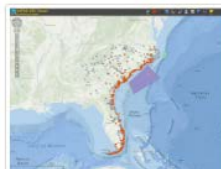
[View Project](#)



### Managed Areas

This web application provides users an opportunity to view managed areas in the SAFMC's jurisdiction. The application contains data for the Allowable Golden Crab Fishery Areas, Shrimp Fishery Access Areas, and Deepwater Coral HAPCs. The application also includes SAFMC Restrictions, Marine Protected Areas, Oculina CHAPC, Danger Zones, and other Federal Marine Managed Areas.

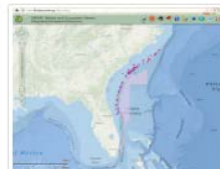
[View Project](#)



### Essential Fish Habitat

You can access available maps of EFH and HAPCs in the South Atlantic region using the SAFMC EFH Viewer. This application displays Essential Fish Habitat (EFH) and Essential Fish Habitat-Habitat Areas of Particular Concern (EFH-HAPCs) for several species under SAFMC's jurisdiction. It also displays EFH for Highly Migratory Species (HMS) managed by NOAA Fisheries.

[View Project](#)



### SAFMC Habitat and Ecosystem Atlas

The SAFMC Regional Habitat and Ecosystem Atlas is here! The SAFMC Habitat and Ecosystem Atlas is a comprehensive site to view a variety of map services supporting fishery management issues in the South Atlantic Bight.

[View Project](#)

- **I.D. Target Audiences**
  - *Dashboard more technical*
- **Streamline Communication**
- **More User Friendly Format**

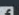

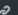



# SAFMC Managed Area Story Maps

<http://www.arcgis.com/apps/MapSeries/index.html?appid=7a215c623a6f4ebe80add3114154b3d8>

## SAFMC Managed Areas

Conserving and managing America's fisheries from three to 200 miles off the coasts of North Carolina, South Carolina, Georgia and Florida.

A story map   



MPAs SMZs Oculina HAPC CHAPCs SFAAs GCFAA

### Deep Water Snapper Grouper MPAs

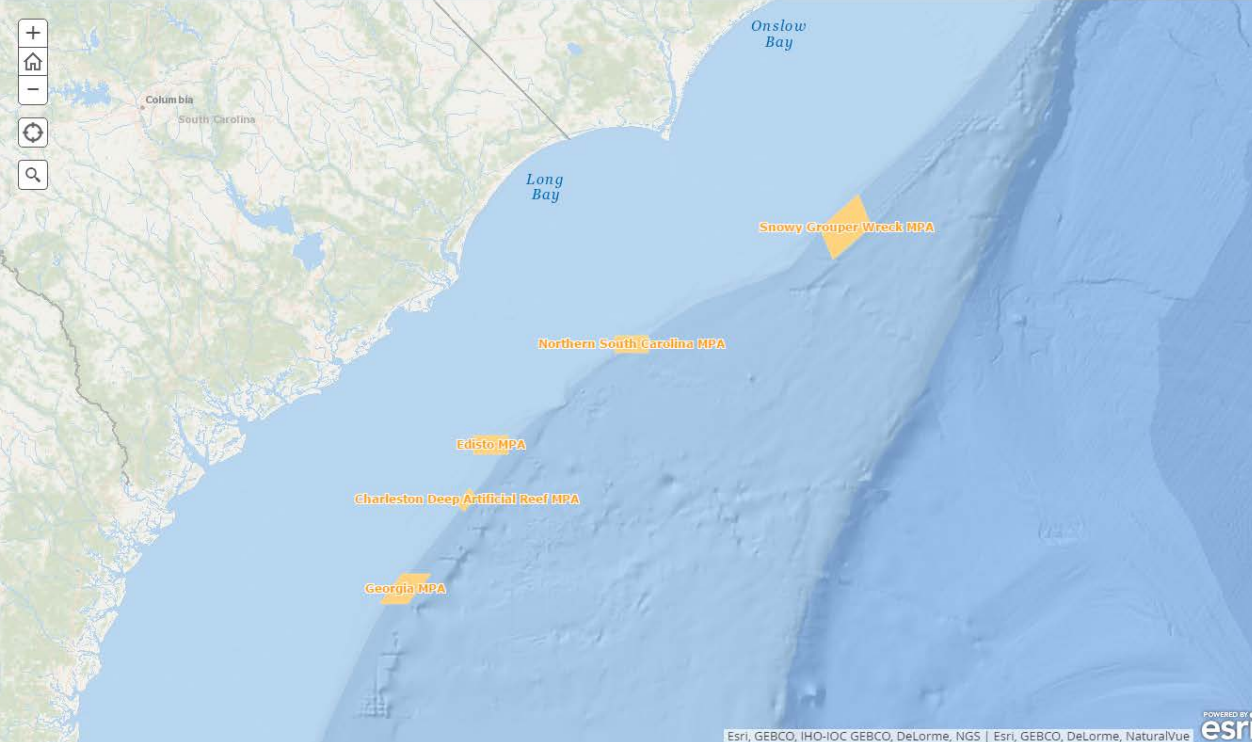
Eight Marine Protected Areas (MPAs) were established in the South Atlantic region in 2009 through Amendment 14 to the Snapper Grouper Fishery Management Plan. The MPAs are designed to protect a portion of the long-lived, "deep water" snapper grouper species such as snowy grouper, speckled hind, and blueline tilefish. The MPAs range in size from 2 X 4 nautical miles to 10 X 15 nautical miles. In addition to the seven areas that encompass natural habitat, one area off Charleston, South Carolina, was established to create a deep water artificial reef.

### Regulations within MPAs (effective February 12, 2009)

- No fishing for or possession of any snapper grouper species.
- No shark bottom longline gear allowed.
- Vessels (both commercial and recreational) may transit (direct, non-stop progression) through the MPAs with snapper grouper species onboard with fishing gear **appropriately stowed\*\***
- Trolling for pelagic species such as tuna, dolphin, mackerel and billfish is allowed within the MPAs.


\*\* Fishing gear **appropriately stowed** means:  
Terminal gear (i.e., hook, leader, sinker, flasher, or bait) used with an automatic reel, bandit gear, buoy gear, hand-line, or rod and reel must be disconnected and stowed separately from such fishing gear. A rod and reel must be removed from the rod holder and stowed securely on or below deck.  
A longline may be left on the drum if all gangions and hooks are disconnected and stowed below deck. Hooks cannot be baited. All buoys must be disconnected from the gear; however, buoys may remain on deck.  
A trawl or try net may remain on deck, but trawl doors must be disconnected from such net and must be secured.  
A gill net, stab net, or trammel net must be left on the drum. Any additional such nets not attached to the drum must be stowed below deck.  
A crustacean trap, golden crab trap, or sea bass pot cannot be baited. All buoys must be disconnected from the gear; however, buoys may remain on deck.

### Deepwater Snapper Grouper MPAs



Map labels: Onslow Bay, Long Bay, Columbia, South Carolina, Snowy Grouper Wreck MPA, Northern South Carolina MPA, Edisto MPA, Charleston Deep Artificial Reef MPA, Georgia MPA.

Map controls: +, Home, -, Refresh, Search.

POWERED BY 

Esri, GEBCO, IHO-IOC/GEBCO, DeLorme, NGS | Esri, GEBCO, DeLorme, NaturalVue



# SAFMC Story Journals

## Meeting Summaries

<http://arcgis.com/arcgis/2cs90dT>

A story map from the SAFMC



### SAFMC September 2016 - Council Meeting Round-up

The South Atlantic Fishery Management Council met in Myrtle Beach, SC on September 12-16, 2016.

The **agenda** was packed with 13 of the Council's Committees meeting to discuss a wide range of management topics.

[View the meeting page.](#)

Scroll through this story journal to learn about items discussed during some of the committee meetings, and highlights of actions the Council took during the meeting,

#### Snapper Grouper Committee

##### SNAPSHOT:

The Committee reviewed several amendments including:

- Snapper Grouper Amendment 37 (Hogfish)
- Snapper Grouper Amendment 41 (Mutton Snapper)
- Snapper Grouper Amendment 43 (Red Snapper)
- Vision Blueprint Recreational Amendment (Several actions)

##### Other Issues:

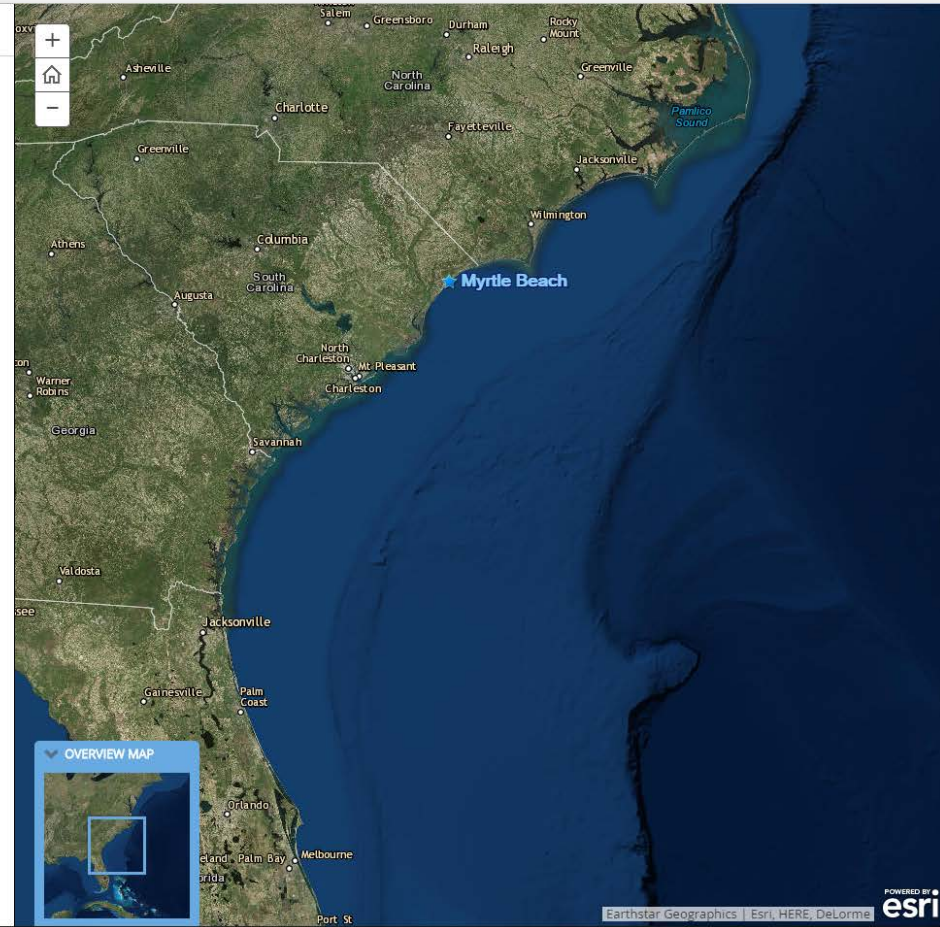
The committee also had a discussion about golden tilefish and issues with the golden tilefish longline endorsement requirements and the season for the commercial hook-and-line sector. The Committee gave staff direction to include an action to explore different fishing year start dates for the golden tilefish commercial hook-and-line sector. The action would be included in the options paper for the Vision Blueprint Commercial Amendment, which the Committee asked to discuss at the December 2016 meeting.

##### Related Web Pages:

#### Snapper Grouper Committee - Hogfish Management

Snapper Grouper Amendment 37 - *What did the Committee discuss for management of hogfish?*

The committee reviewed the final actions of the amendment that will establish and set management measures for the two stocks of hogfish in the South Atlantic - *Georgia-North Carolina and Florida Keys/East Florida stocks.*



# SAFMC Story Journals

## Amendment Summaries

<http://arcg.is/29yCflt>

A story map from the SAFMC



### SAFMC Public Hearing - August 2016: Snapper Grouper Amendment 41

#### OVERVIEW: Snapper Grouper Amendment 41

Welcome! Scroll through the story map to learn more about proposed fishing level specifications and management measures for **mutton snapper** in the amendment, *Snapper Grouper Amendment 41*.

#### What Would Amendment 41 Do?

- Update biological benchmarks based on the most recent stock assessment and update the acceptable biological catch
- Revise fishing levels based on new acceptable biological catch
- Revise/establish recreational and commercial management measures.

#### What Actions are Being Proposed for Mutton Snapper?

Snapper Grouper Amendment 41 proposes the following 8 actions for mutton snapper in the South Atlantic Region:

1. Specify maximum sustainable yield (MSY)
2. Specify minimum stock size threshold (MSST)
3. Revise annual catch limits (ACLs) and optimum yield (OY)
4. Revise the recreational annual catch target (ACT)
5. Modify the minimum size limit
6. Designate a spawning season for regulatory purposes
7. Modify the recreational bag limit
8. Modify the commercial trip limit

#### Why is the Council considering action for mutton snapper?

- An update to the stock assessment for mutton snapper (SEDAR 15A Update 2015) was conducted in 2015 with data through 2013.
- SEDAR 15A resulted in revisions to the MSY, MSST and recommendations for a new ABC.
- The 2015 assessment estimated a smaller adult population compared to the 2008 assessment (based on improvements to the modeling approach).

